

■ OUTLINE

The R1141Q Series are voltage regulator ICs with high output voltage accuracy, low supply current, low ON-resistance, and high ripple rejection by CMOS process. Each of these voltage regulator ICs consists of a voltage reference unit, an error amplifier, resistors for setting Output Voltage, a current limit circuit, and a chip enable circuit.

Output Current Limit circuit is embedded in the R1141Q Series to prevent the break down of the IC caused by excess current. Chip enable circuit realizes standby mode and makes consumption current extremely small.

These ICs perform with low dropout voltage and a chip enable function. The line transient response and load transient response of the R1141Q Series are excellent, thus these ICs are very suitable for the power supply for hand-held communication equipment.

The output voltage of these ICs is internally fixed with high accuracy. Since the package for these ICs is SC-82AB (Super Mini-mold) package, high density mounting of the ICs on boards is possible.

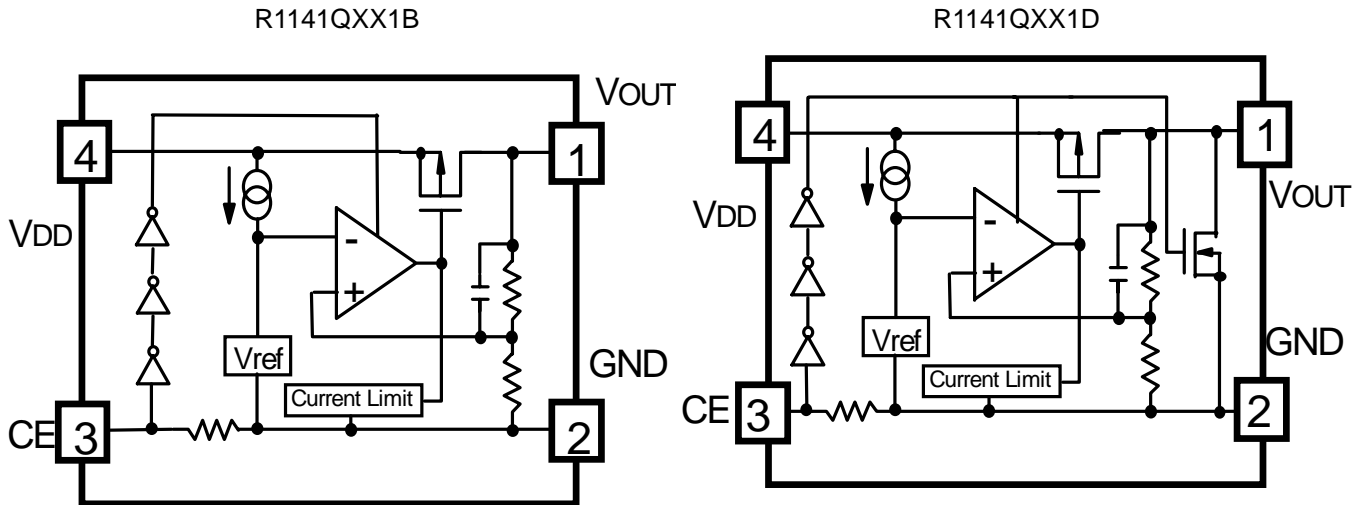
■ FEATURES

- Ultra-Low Supply Current..... TYP. 90 μ A
- Standby Mode TYP. 0.1 μ A
- Low Dropout Voltage TYP. 0.15V($I_{OUT}=100$ mA Output Voltage=3.0V Type)
- High Ripple Rejection TYP. 75dB($V_{OUT}\leq 2.4$ V), 70dB($V_{OUT}\geq 2.5$ V) ($f=1$ kHz)
- Low Temperature-Drift Coefficient of Output Voltage TYP. ± 100 ppm/ $^{\circ}$ C
- Excellent Line Regulation TYP. 0.05%/V
- High Output Voltage Accuracy..... $\pm 1.5\%$ or ± 30 mV($V_{OUT}\leq 2.0$ V)
- Excellent Dynamic Response
- Small Package SC-82AB(Super Mini-mold)
- Output Voltage..... Stepwise setting with a step of 0.1V in the range of 1.5V to 4.0V is possible
- Built-in chip enable circuit (B/D: active high)
- Built-in fold-back protection circuit TYP. 40mA (Current at short mode)
- Ceramic capacitor can be used for Output pin..... Recommended value is 2.2 μ F or more.

■ APPLICATIONS

- Power source for cellular phones such as GSM, CDMA and various kinds of PCS.
- Power source for electrical appliances such as cameras, VCRs, camcorders, and hand-held communication equipment.
- Power source for battery-powered equipment.
- Very stable Voltage Reference

■ BLOCK DIAGRAM



■ SELECTION GUIDE

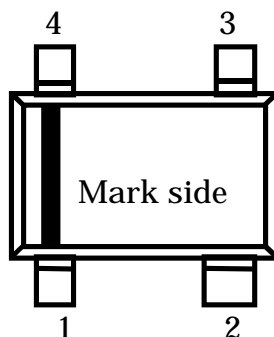
The output voltage, mask option, and the taping type for the ICs can be selected at the user's request. The selection can be made with designating the part number as shown below;

R1141QXX1X-XX ←Part Number
 ↑ ↑ ↑ ↑
 a b c d

Code	Contents
a	Designation of Package Type : Q:SC82-AB (Super Mini-mold)
b	Setting Output Voltage (V_{OUT}) : Stepwise setting with a step of 0.1V in the range of 1.5V to 4.0V is possible.
c	Designation of Mask Option : B: Without auto discharge function at OFF state. D: With auto discharge function at OFF state.
d	Designation of Taping Type : Ex. TR, TL (refer to Taping Specifications; TR type is the standard direction.)

■ PIN CONFIGURATION

SC-82AB



■ PIN DESCRIPTION

Pin No.	Symbol	Description
1	V_{OUT}	Output pin
2	GND	Ground Pin
3	CE	Chip Enable Pin
4	V_{DD}	Input Pin

■ ABSOLUTE MAXIMUM RATINGS

Item	Symbol	Rating	Unit
Input Voltage	V_{IN}	6.5	V
Input Voltage(CE Pin)	V_{CE}	-0.3 ~ $V_{IN}+0.3$	V
Output Voltage	V_{OUT}	-0.3 ~ $V_{IN}+0.3$	V
Output Current	I_{OUT}	140	mA
Power Dissipation	P_D	150	mW
Operating Temperature Range	T_{opt}	-40 ~ 85	°C
Storage Temperature Range	T_{stg}	-55 ~ 125	°C

ELECTRICAL CHARACTERISTICS

R1141QXX1B/R1141QXX1D

Topt=25°C

Symbol	Item	Conditions	MIN.	TYP.	MAX.	Unit
V _{OUT}	Output Voltage	V _{IN} = Set V _{OUT} +1V 1mA ≤ I _{OUT} ≤ 30mA(Note 1)	V _{OUT} ×0.985 (-30mV)		V _{OUT} ×1.015 (+30mV)	V
I _{OUT}	Output Current	V _{IN} - V _{OUT} = 1.0V	120			mA
ΔV _{OUT} /ΔI _{OUT}	Load Regulation	V _{IN} = Set V _{OUT} +1V 1mA ≤ I _{OUT} ≤ 120mA		12	40	mV
V _{DIF}	Dropout Voltage	Refer to the ELECTRICAL CHARACTERISTICS by OUTPUT VOLTAGE				
I _{SS}	Supply Current	V _{IN} = Set V _{OUT} +1V		90	160	μA
I _{standby}	Supply Current (Standby)	V _{IN} = V _{CE} = Set V _{OUT} +1V		0.1	1.0	μA
ΔV _{OUT} /ΔV _{IN}	Line Regulation	Set V _{OUT} +0.5V ≤ V _{IN} ≤ 6V I _{OUT} = 30mA (In case that V _{OUT} ≤ 1.6V, 2.2V ≤ V _{IN} ≤ 6V)		0.05	0.10	%/V
RR	Ripple Rejection	f = 1kHz, Ripple 0.5Vp-p V _{IN} = Set V _{OUT} +1V, I _{OUT} = 30mA (In case that V _{OUT} ≤ 1.7V, V _{IN} - V _{OUT} = 1.2V)		75 (70) (Note 2)		dB
V _{IN}	Input Voltage		2.2		6.0	V
ΔV _{OUT} /ΔT	Output Voltage Temperature Coefficient	I _{OUT} = 30mA -40°C ≤ Topt ≤ 85°C		±100		ppm/°C
I _{lim}	Short Current Limit	V _{OUT} = 0V		40		mA
R _{PU}	CE Pull-up Resistance		0.7	2.0	8.0	MΩ
V _{CEH}	CE Input Voltage "H"		1.5		V _{IN}	V
V _{CEL}	CE Input Voltage "L"		0.0		0.3	V
e _n	Output Noise	BW=10Hz to 100kHz		30		μVrms
R _{LOW}	Low Output Nch Tr. ON Resistance (of D version)	V _{CE} =0V		60		Ω

Note 1: ±30mV Tolerance at V_{OUT} ≤ 2.0V

Note 2: 70dB at V_{OUT} ≥ 2.5V

ELECTRICAL CHARACTERISTICS by OUTPUT VOLTAGE

Topt = 25°C

Output Voltage V _{OUT} (V)	Dropout Voltage		
	V _{DIF} (V)		
	Condition	TYP.	MAX.
V _{OUT} = 1.5	I _{OUT} = 120mA	0.36	0.70
V _{OUT} = 1.6		0.32	0.60
V _{OUT} = 1.7		0.30	0.50
1.8 ≤ V _{OUT} ≤ 2.0		0.28	0.40
2.1 ≤ V _{OUT} ≤ 2.7		0.24	0.35
2.8 ≤ V _{OUT} ≤ 4.0		0.18	0.28

TECHNICAL NOTES

When using these ICs, consider the following points:

Phase Compensation

In these ICs, phase compensation is made for securing stable operation even if the load current is varied. For this purpose, be sure to use a 2.2 μ F or more capacitor C_{OUT} with good frequency characteristics and ESR (Equivalent Series Resistance). (Note: When the additional ceramic capacitors are connected to the Output Pin with Output capacitor for phase compensation, the operation might be unstable. Because of this, test these ICs with as same external components as ones to be used on the PCB.)

PCB Layout

Make VDD and GND line sufficient. When the impedance of these is high, it would be a cause of picking up the noise or unstable operation. Connect a capacitor with as much as 1.0 μ F capacitor between VDD and GND pin as close as possible. Set external components, especially output capacitor as close as possible to the ICs and make wiring shortest.

TEST CIRCUITS

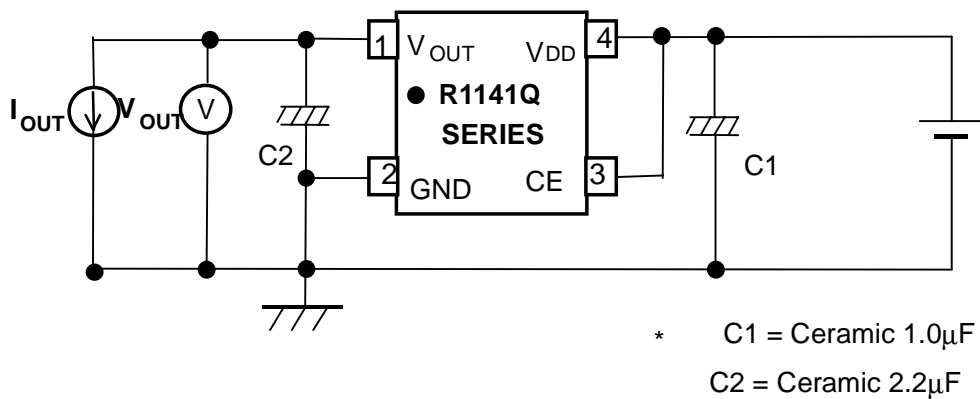


Fig.1 Standard test Circuit

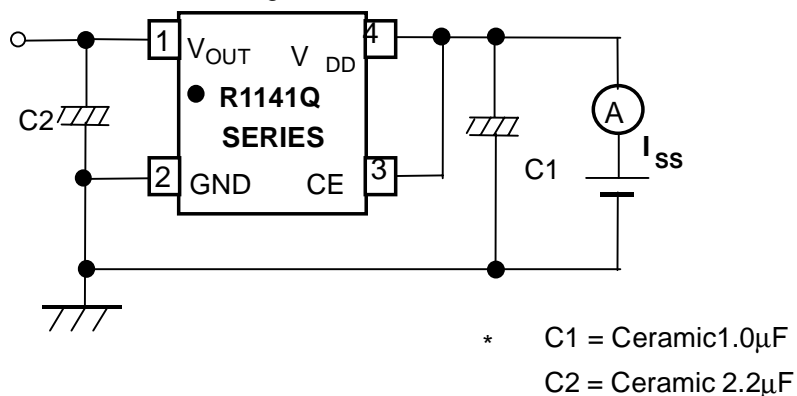


Fig.2 Supply Current Test Circuit

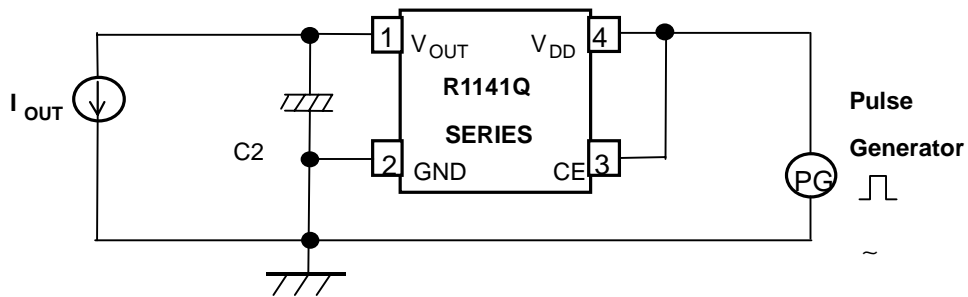


Fig.3 Ripple Rejection, Line Transient Response Test Circuit

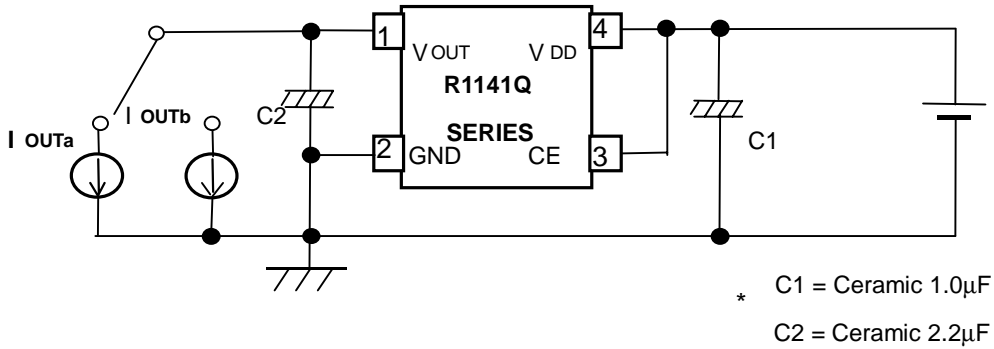
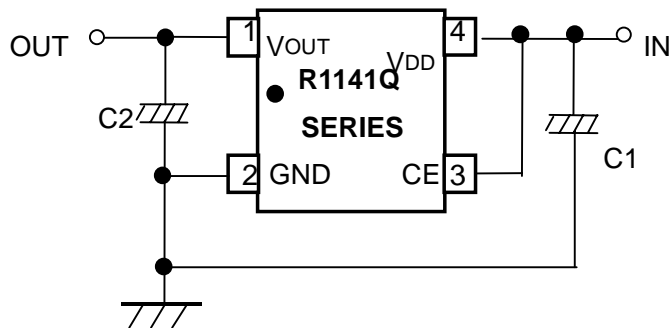


Fig.4 Load Transient Response Test Circuit

■ TYPICAL APPLICATION



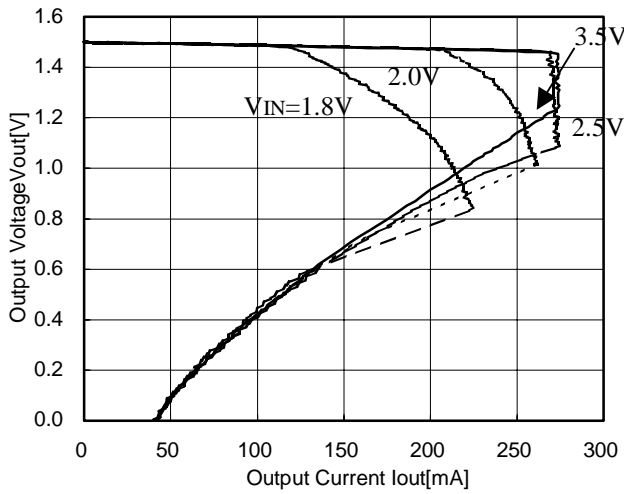
(External Components)

Output Capacitor; Ceramic Type C1=1 μ F C2=2.2 μ F

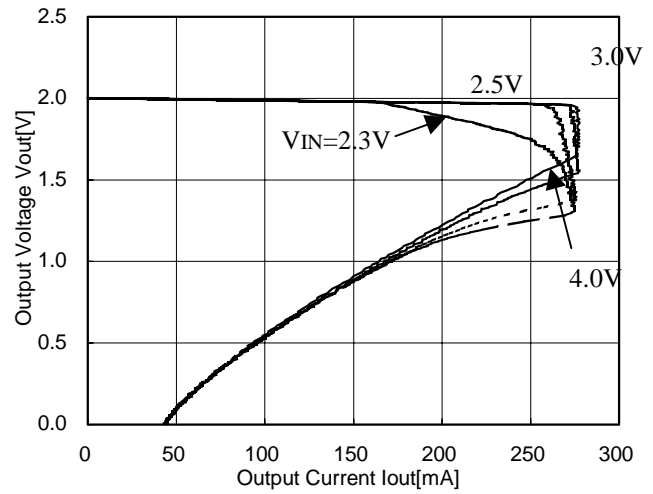
TYPICAL CHARACTERISTICS

1) Output Voltage vs. Output Current

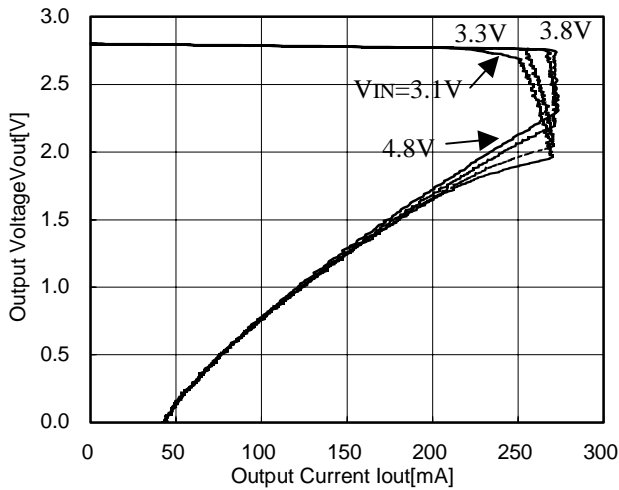
R1141Q151X



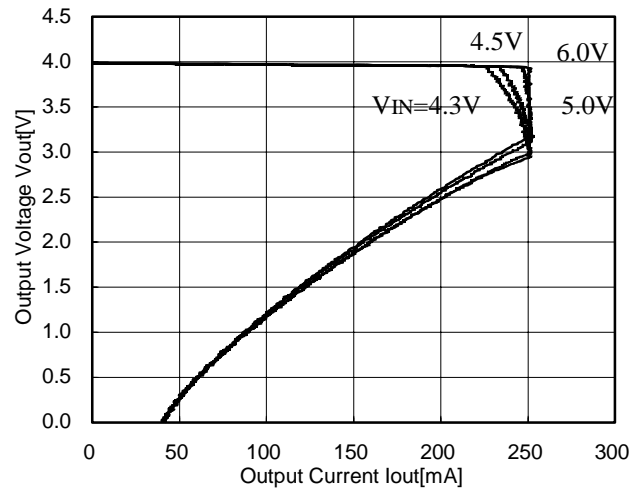
R1141Q201X



R1141Q281X

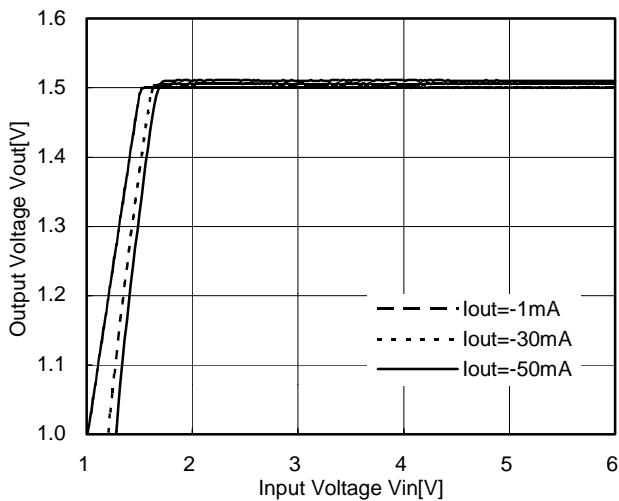


R1141Q401X

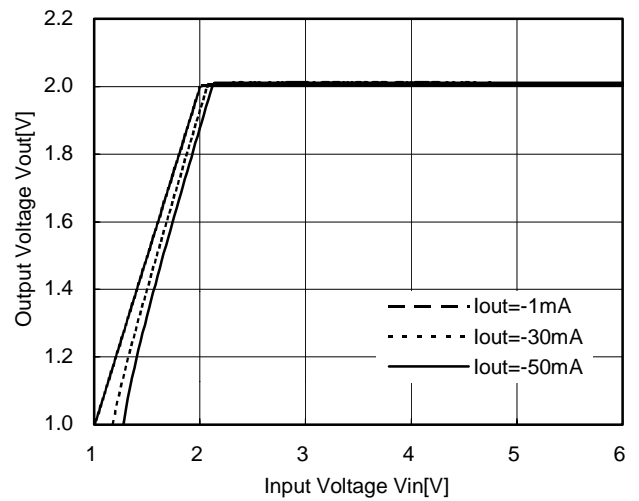


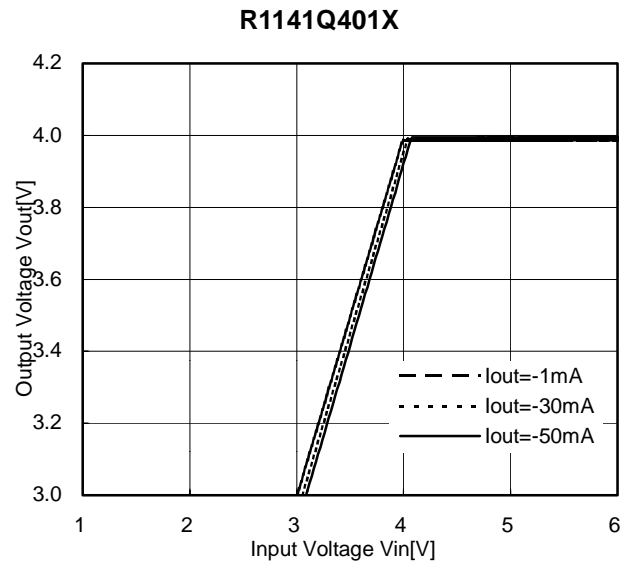
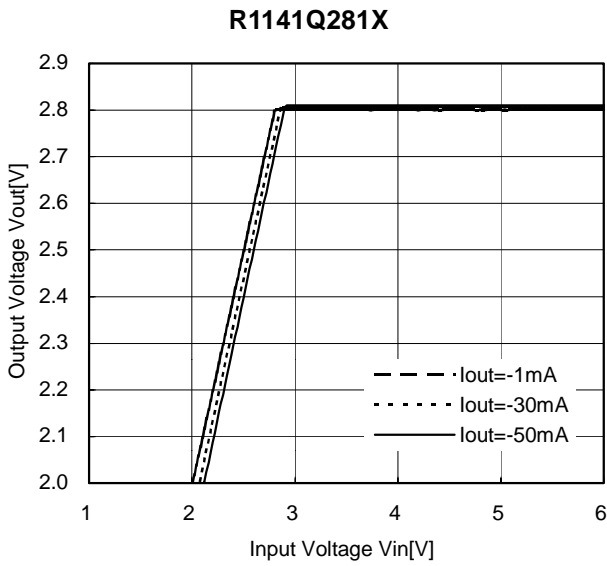
2) Output Voltage vs. Input Voltage

R1141Q151X



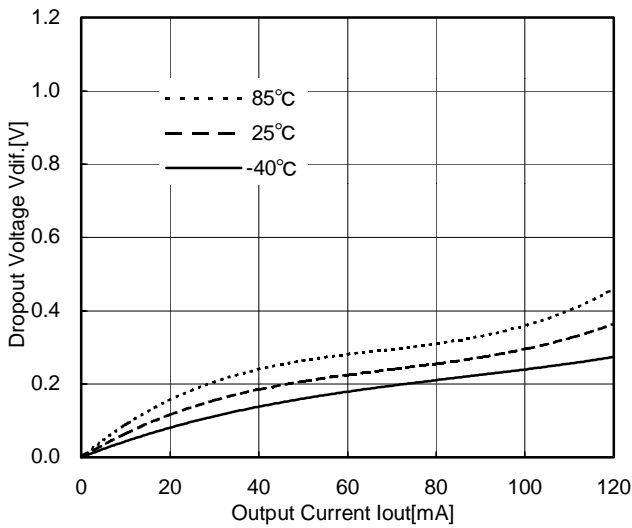
R1141Q201X



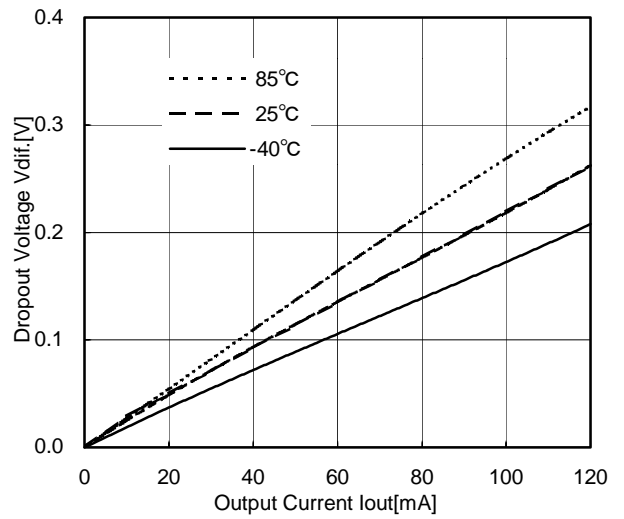


3) Dropout Voltage vs. Output Current

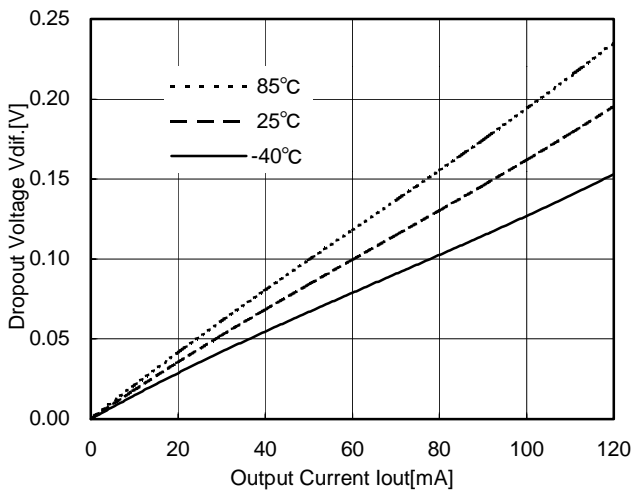
R1141Q151X



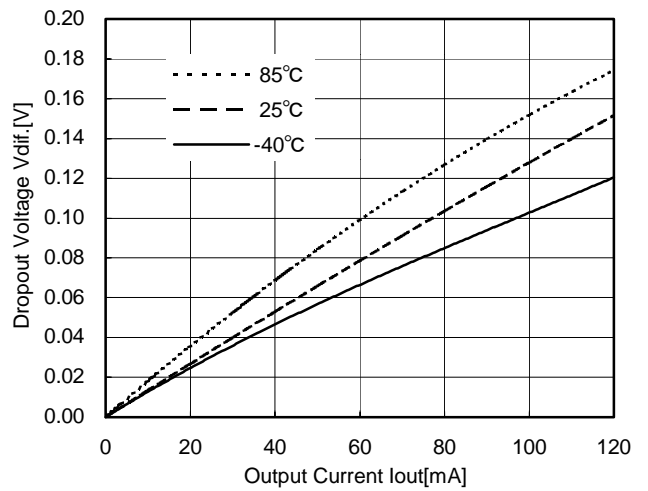
R1141Q201X



R1141Q281X

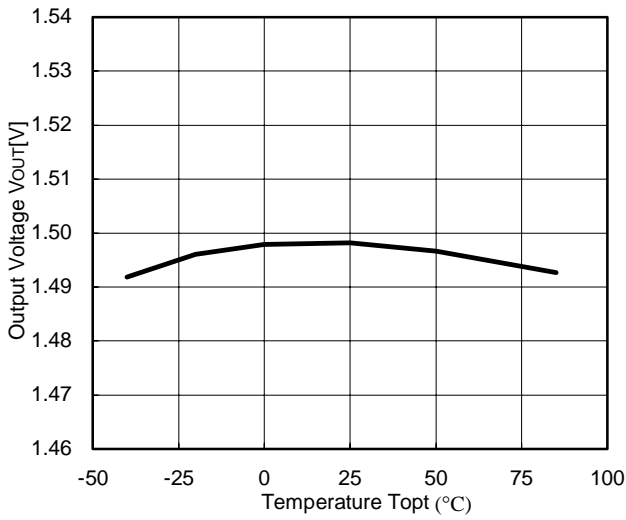


R1141Q401X

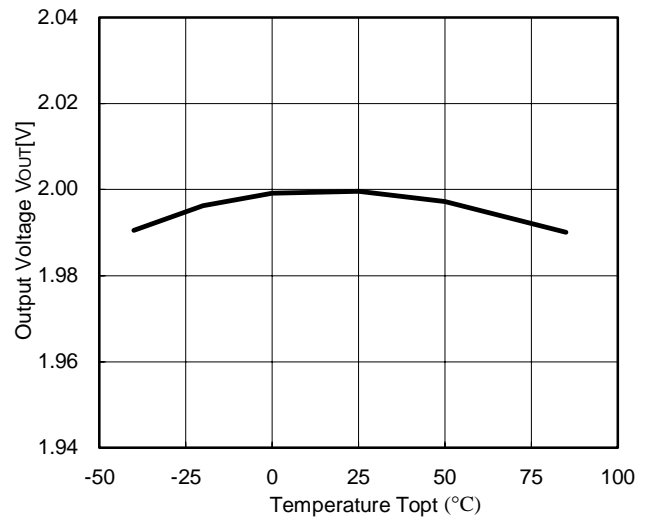


4) Output Voltage vs. Temperature

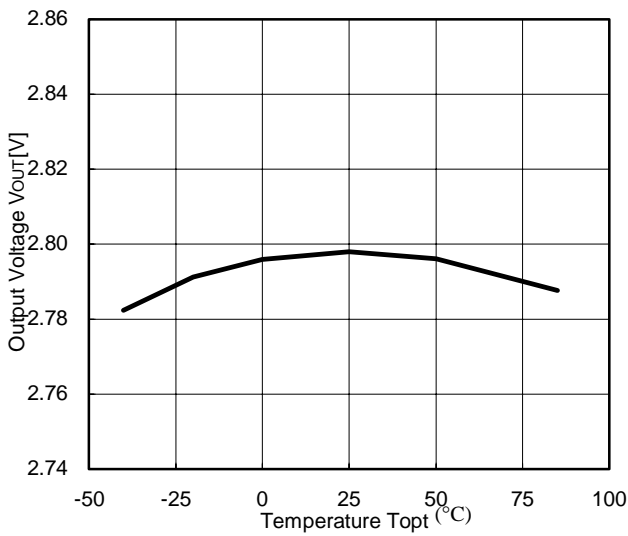
R1141Q151X
VIN=2.5V, IOUT=30mA



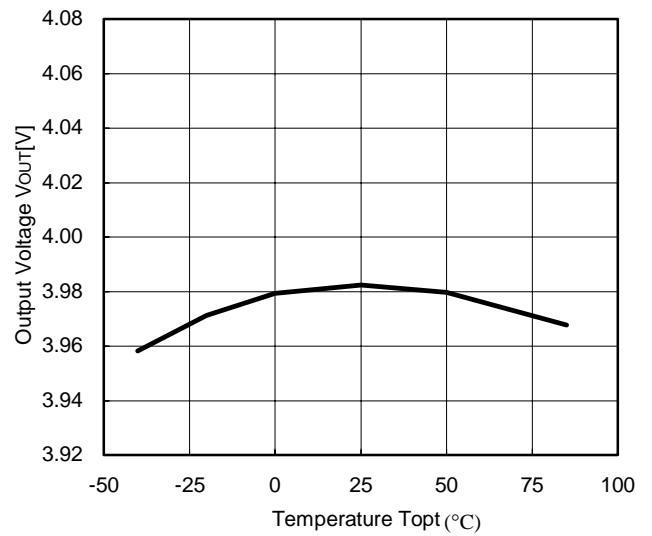
R1141Q201X
VIN=3.0V, IOUT=30mA



R1141Q281X
VIN=3.8V, IOUT=30mA

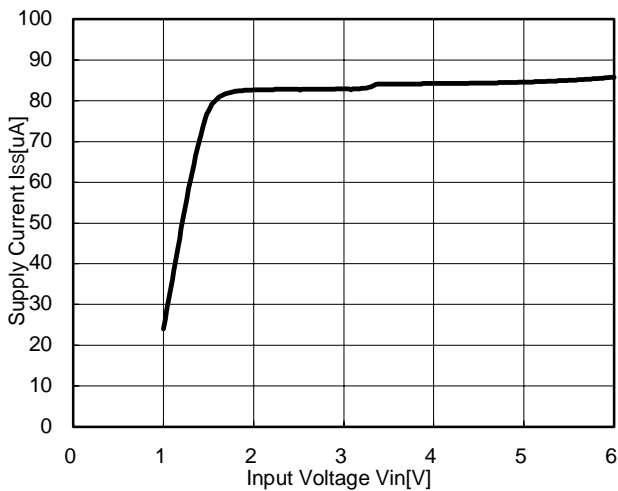


R1141Q401X
VIN=5.0V, IOUT=30mA

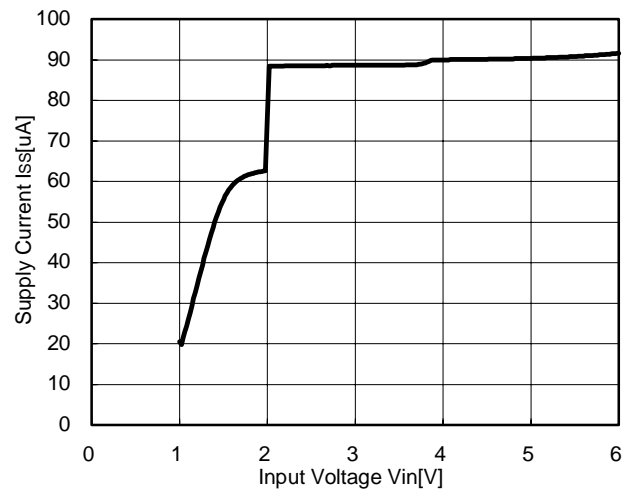


5) Supply Current vs. Input Voltage (Topt=25°C)

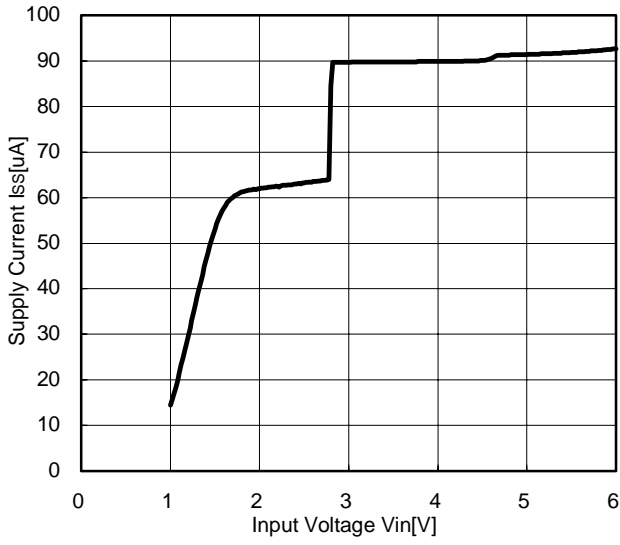
R1141Q151X



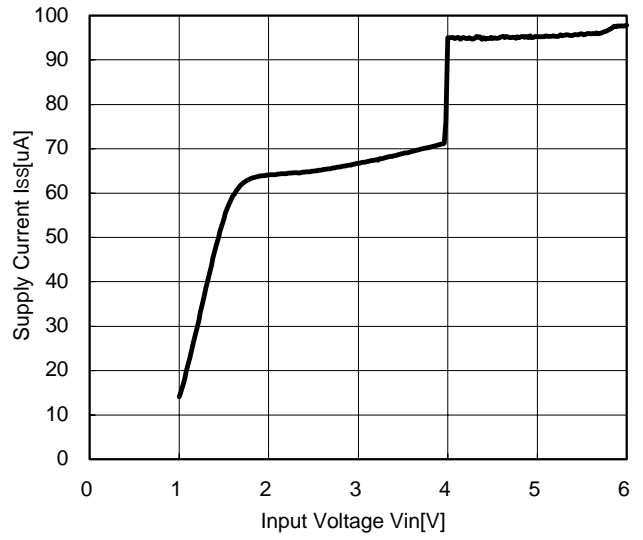
R1141Q201X



R1141Q281X



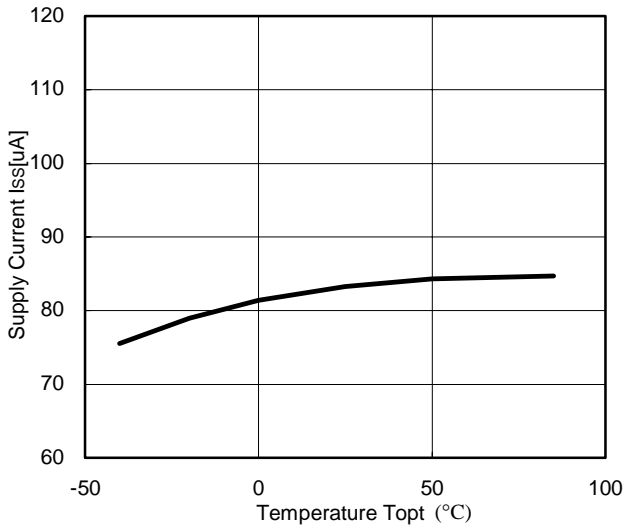
R1141Q401X



6) Supply Current vs. Temperature

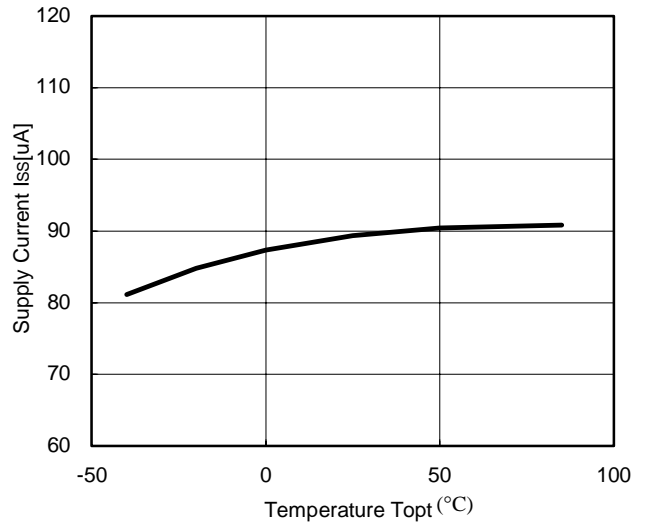
R1141Q151X

VIN=2.5V



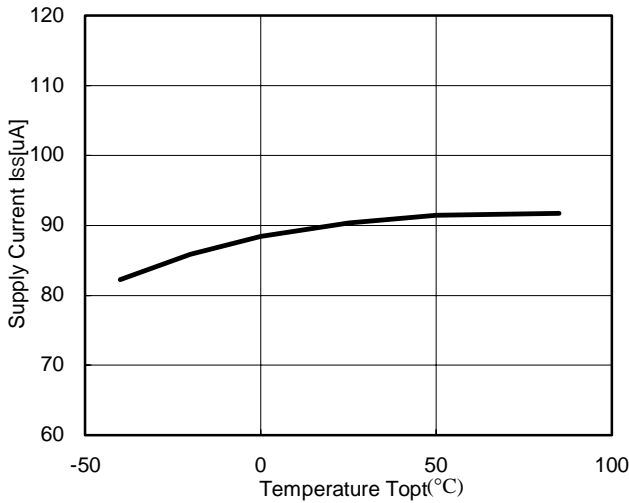
R1141Q201X

VIN=3.0V



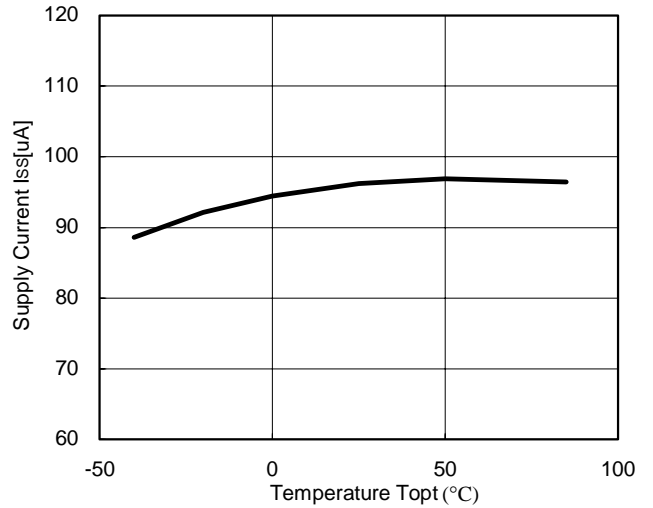
R1141Q281X

VIN=3.8V

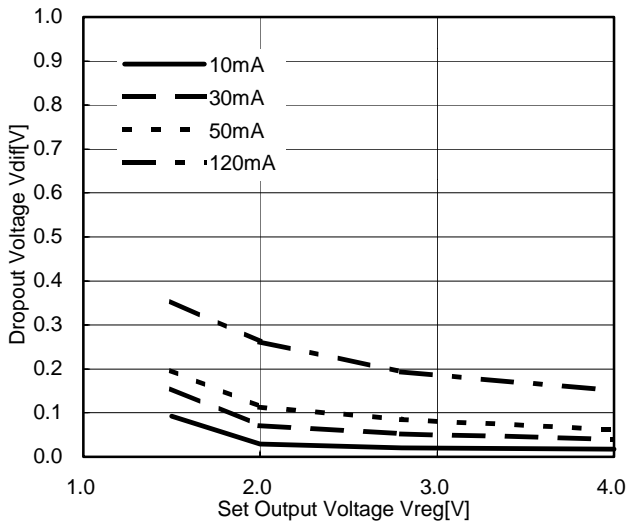


R1141Q401X

VIN=5.0V



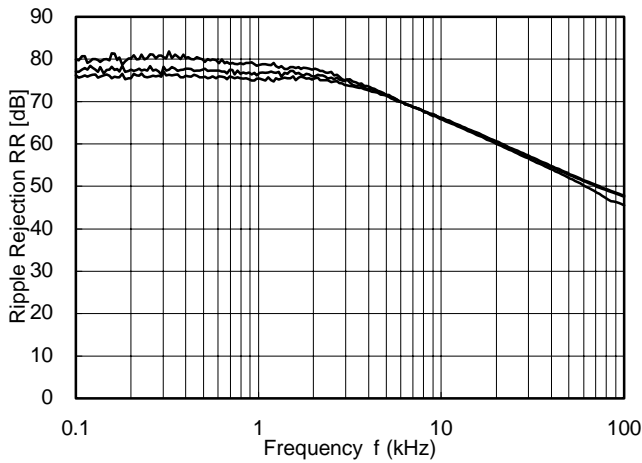
7) Dropout Voltage vs. Set Output Voltage



8) Ripple Rejection vs. Frequency

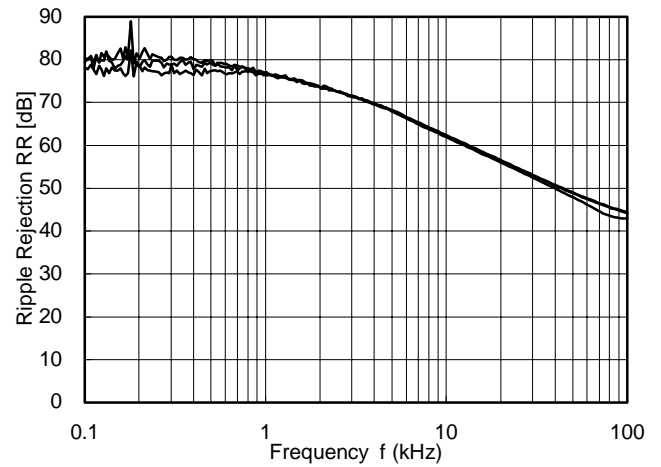
R1141Q151X

$V_{IN}=2.5V+0.5V_{p-p}$, C_{IN} = none, C_{OUT} = Ceramic $2.2\mu F$



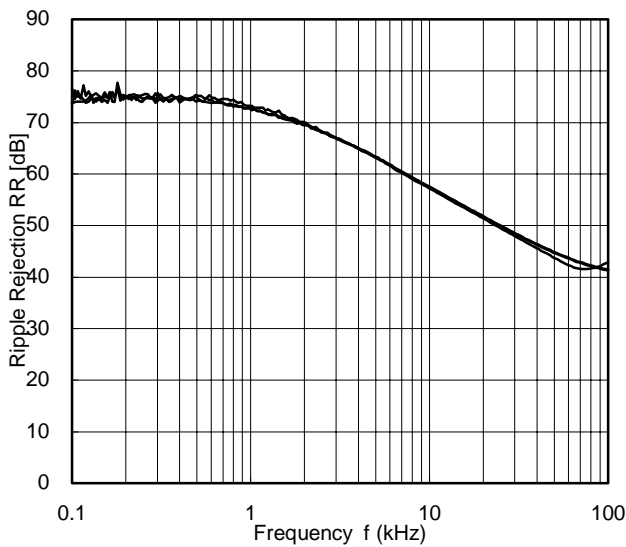
R1141Q281X

$V_{IN}=3.8V+0.5V_{p-p}$, C_{IN} = none, C_{OUT} = Ceramic $2.2\mu F$



R1141Q401X

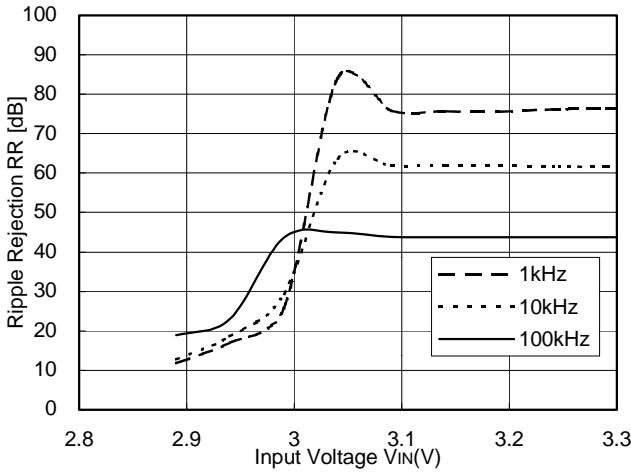
$V_{IN}=5.0V+0.5V_{p-p}$, C_{IN} = none, C_{OUT} = Ceramic $2.2\mu F$



9) Ripple Rejection vs. Input Bias

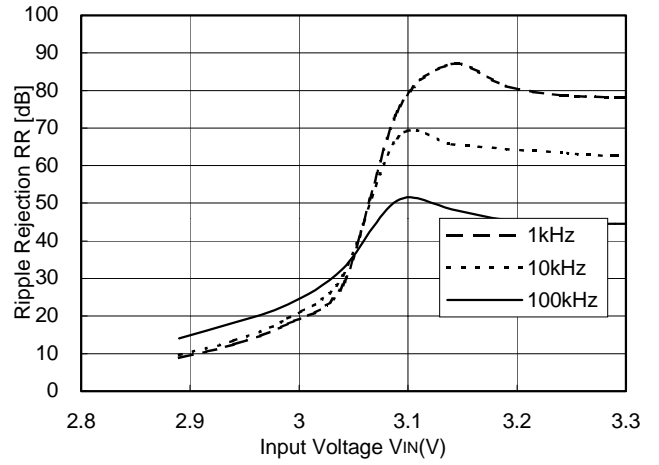
R1141Q281X

I_{OUT}=1mA, C_{IN} = none, C_{OUT} = Ceramic 2.2μF



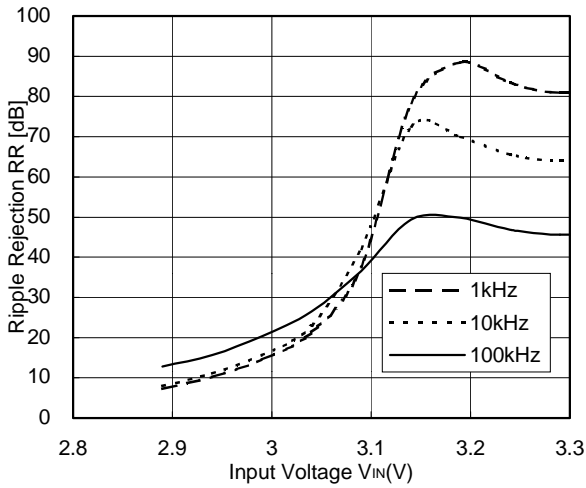
R1141Q281X

I_{OUT}=30mA, C_{IN} = none, C_{OUT} = Ceramic 2.2μF



R1141Q281X

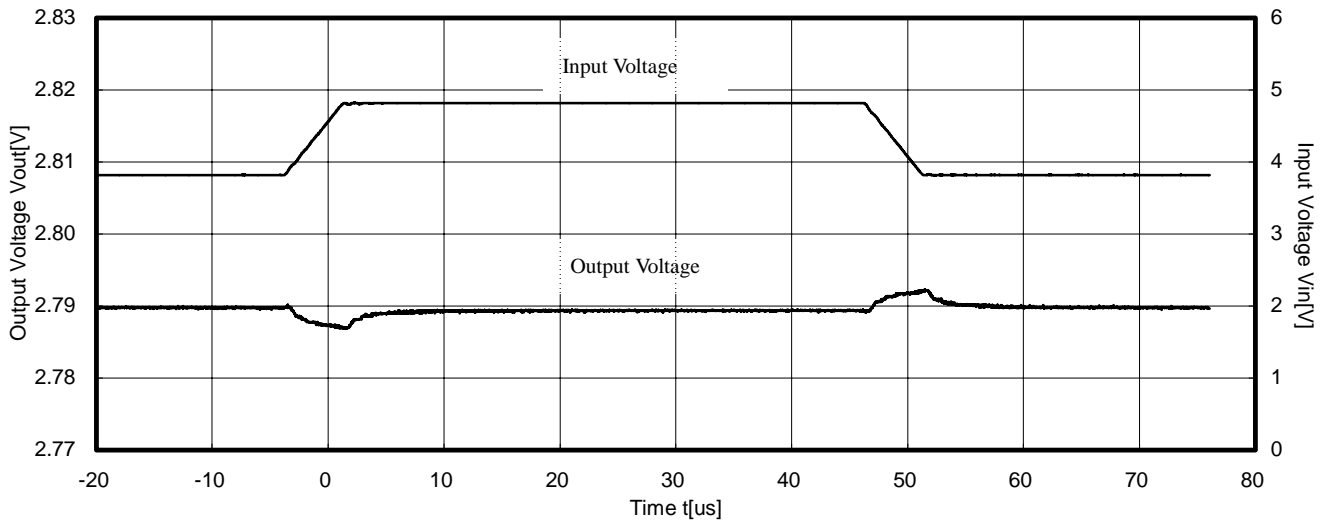
I_{OUT}=50mA, C_{IN} = none, C_{OUT} = Ceramic 2.2μF



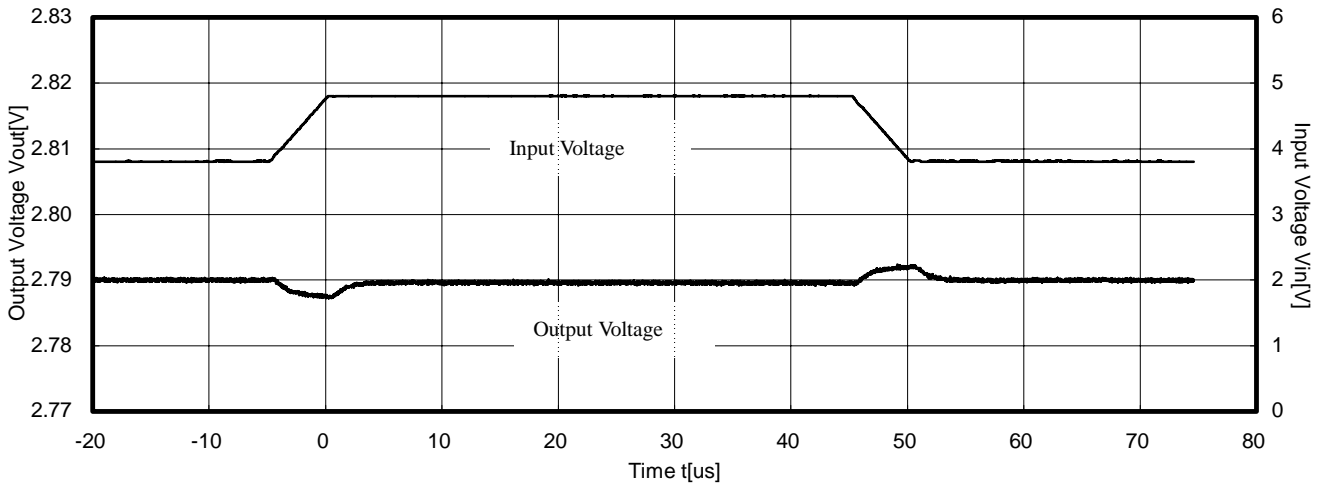
10) Input Transient Response

R1141Q281X

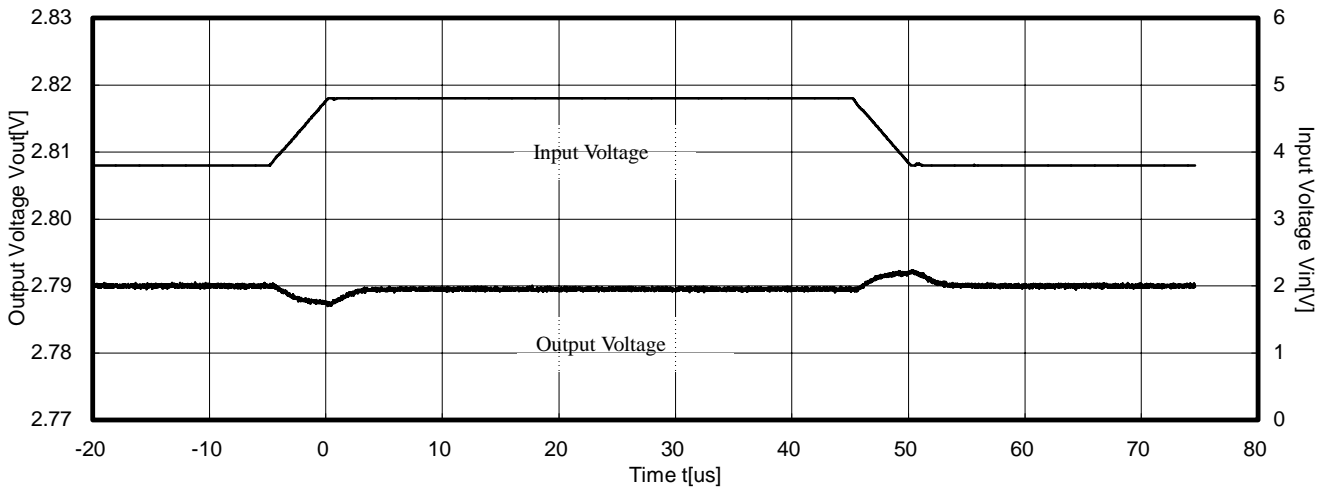
V_{IN}=3.8V to 4.8V, I_{OUT}=30mA, C_{OUT} = Ceramic 1.0μF, Tr=Tf=5.0μs



R1141Q281X
 $V_{IN}=3.8V$ to $4.8V$, $I_{OUT}=30mA$, C_{OUT} = Ceramic $2.2\mu F$, $T_r=T_f=5.0\mu s$

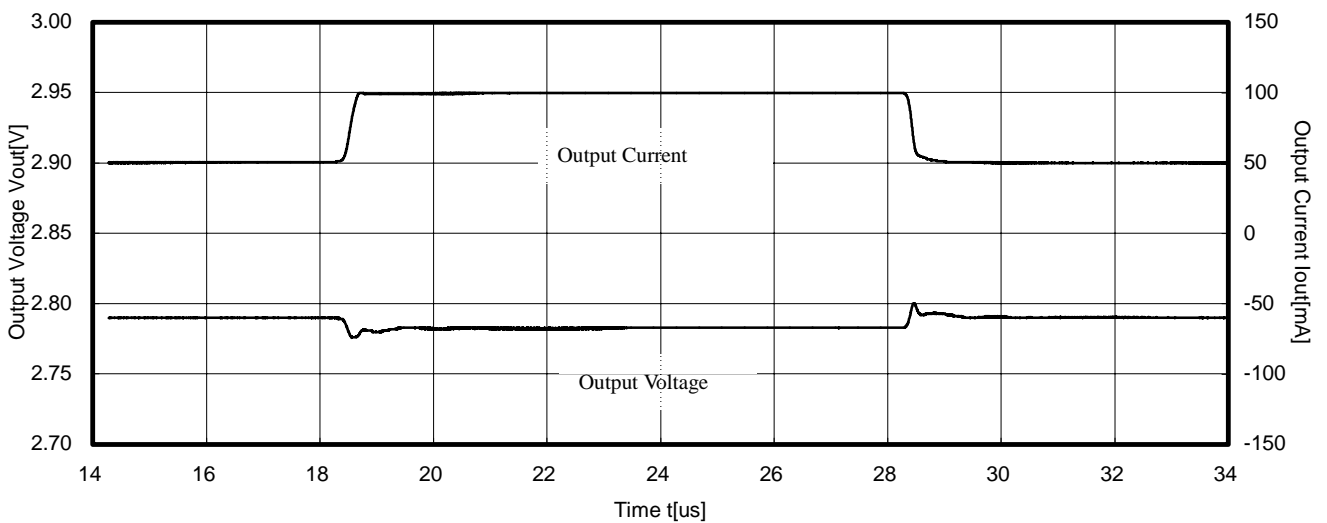


R1141Q281X
 $V_{IN}=3.8V$ to $4.8V$, $I_{OUT}=30mA$, C_{OUT} = Ceramic $4.7\mu F$, $T_r=T_f=5.0\mu s$

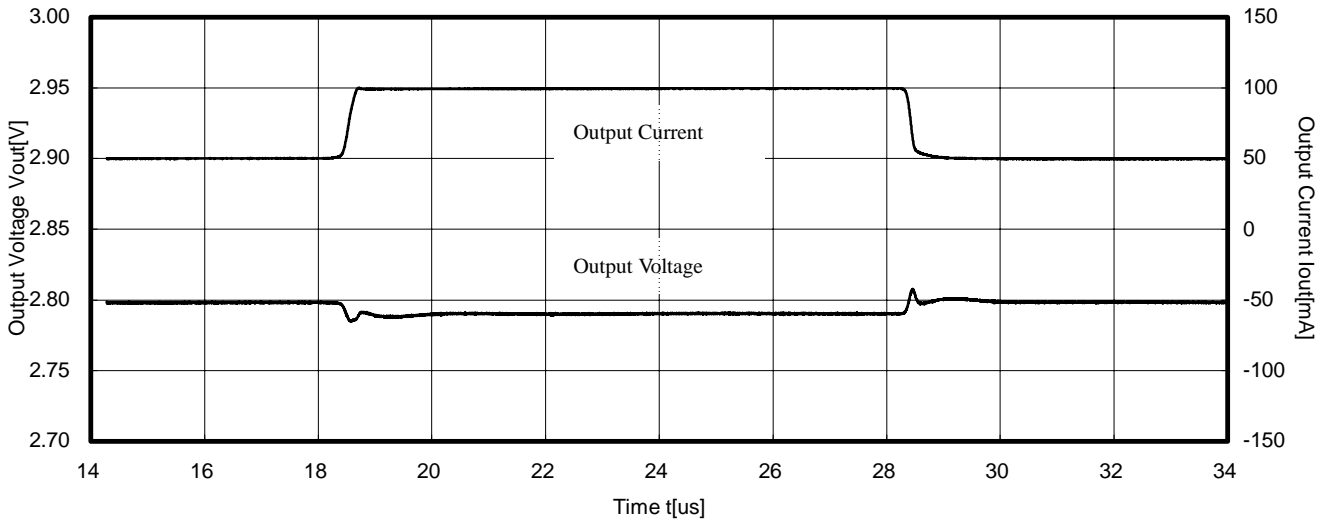


11) Load Transient Response

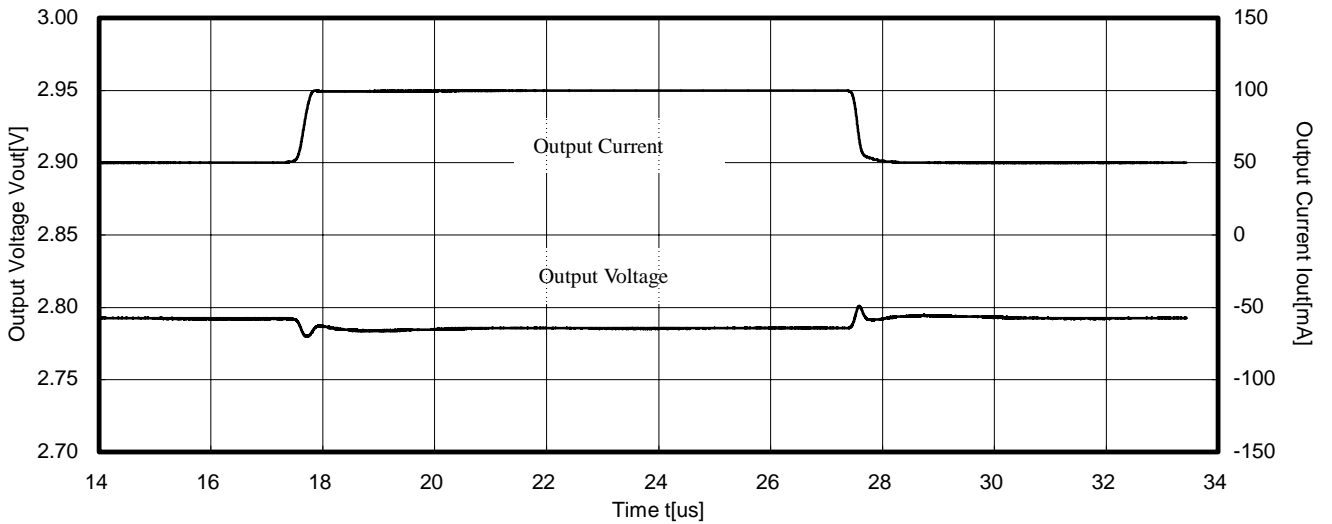
R1141Q281X
 $V_{IN}=3.8V$, $I_{OUT}=50mA$ 100mA, C_{IN} = Ceramic $1.0\mu F$ C_{OUT} = Ceramic $1.0\mu F$, $T_r=T_f=5.0\mu s$



R1141Q281X
VIN=3.8V, IOUT=50mA→100mA, CIN = Ceramic 1.0μF COUT = Ceramic 2.2μF, Tr=Tf=5.0μs



R1141Q281X
VIN=3.8V, IOUT=50mA→100mA, CIN = Ceramic 1.0μF COUT = Ceramic 4.7μF, Tr=Tf=5.0μs



TECHNICAL NOTES

When using these ICs, consider the following points:

In these ICs, phase compensation is made for securing stable operation even if the load current is varied. For this purpose, be sure to use a capacitor C_{OUT} with good frequency characteristics and ESR (Equivalent Series Resistance) of which is in the range described as follows:

The relations between I_{OUT} (Output Current) and ESR of Output Capacitor are shown below. The conditions when the white noise level is under $40\mu V$ (Avg.) are marked as the hatched area in the graph.

<Test conditions>

- (1) $V_{IN} = V_{SET} + 1V$
- (2) Frequency band: 10Hz to 30MHz
- (3) Temperature: $25^{\circ}C$

