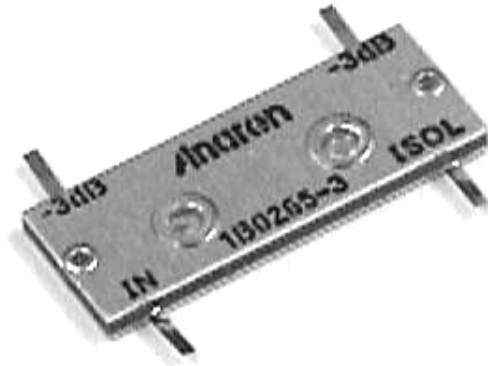


### Hybrid Couplers 3 dB, 90°

#### Applications

- Microstrip Circuits
- Divider/Combiners
- Switch Networks
- Balanced Detectors
- Antenna Feeds



#### Features

- Welded Tab Mount
- 2-Way Power Split
- Reliable Performance
- Handles 100 Watts

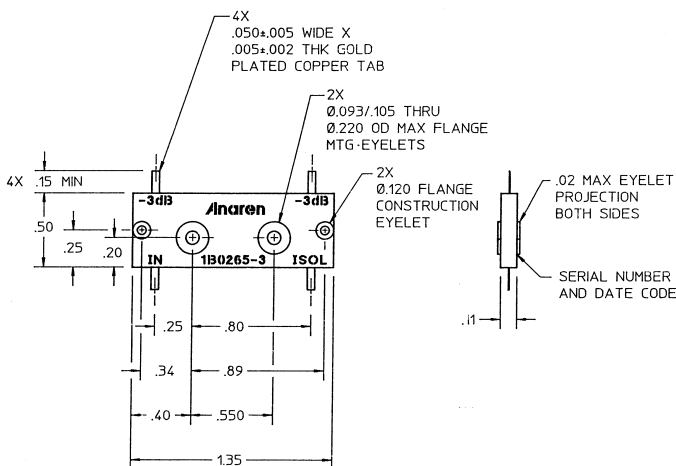
#### Electrical Specifications

Frequency GHz	Isolation dB Min/Typ	Insert. Loss dB Max	VSWR Max : 1
1.0 - 2.0	18/24	0.30	1.25/1.15
Amp. Bal. dB Max	Phase Bal. Degrees Max	Power Ave. CW Watts	
±0.50	±2.0	100	

**Notes:** Electrical specifications apply only with properly designed test fixtures. Testing is done at ambient temperature only. Sample testing is performed to MIL-STD-105, Level 2, AQL 1.0. Test includes coupling, amplitude balance, insertion loss and isolation. If your application requires additional testing, consult Anaren Power rating applies when solder tab/coupler interface has been conformally coated. Impedance: 50 ohms. Meets MIL-E-5400 Class 3 requirements. Additional screening available for military and space applications.

**Electrical and Mechanical Specifications subject to change without notice.**

#### Outline Drawing



#### NOTES:

1. DIMENSIONS ARE IN INCHES OVER (MILLIMETERS)
2. MARKING SHALL BE IN ACCORDANCE WITH MIL-STD-130
3. FINISH: CHEMICAL CONVERSION COAT (CLEAR) PER MIL-C-5541, CLASS 1A
4. SOLDER TAB:
  - 4.1 MATERIAL: FLAT WIRE, COPPER-061, PER ASTM-B-272
  - 4.2 FINISH: GOLD PLATE PER MIL-G-45204, TYPE 3, GRADE A, CLASS 00. OVER NICKEL SULFAMATE FLASH PER QQ-N-290, CLASS I.