

COUPLERS, DIRECTIONAL

TYPE N 0.5-3 GHz

SERIES CA-N

GENERAL INFORMATION

KDI/Triangle Miniature Stripline Couplers, Series CA-N, are available in 10 dB, 20 dB and 30 dB, coupling values. These units feature high directivity and low VSWR and are conservatively rated to ensure the most reliable service and performance under severe environmental conditions.

GENERAL SPECIFICATIONS

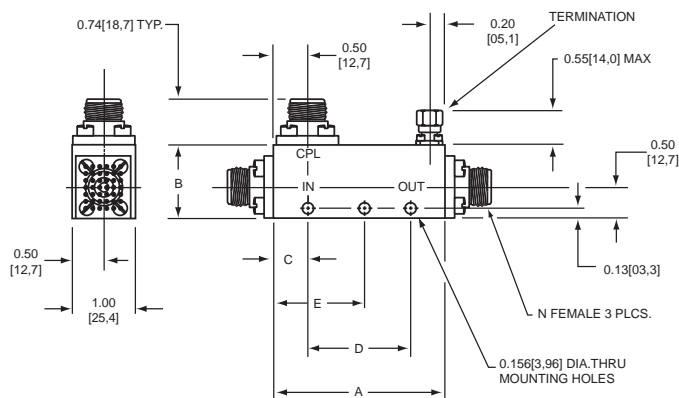
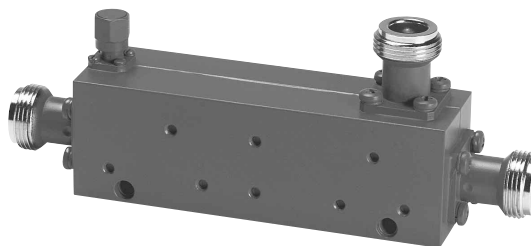
Frequency Range:	0.5 to 3 GHz
RF Impedance:	50 Ohms
RF Power:	The peak and average power handling capability of the couplers apply if the main line is terminated in a 1.25 maximum VSWR for the 10 dB couplers, and in a 1.75 maximum VSWR for the 20 and 30 dB couplers.
Operating Temperature:	-55°C to +85°C
Connectors:	N Female

Notes:

1. Rugged 4 hole connector construction insures mechanical superiority.
2. A 50 ohm termination is supplied on each unit delivered. Power rating is 1.0 watts at +25°C

MECHANICAL OUTLINE

	A	B	C	D	E
Outline	in[mm]	in[mm]	in[mm]	in[mm]	in[mm]
1	3.50[88,9]	1.14[28,96]	0.50[12,7]	2.800[71,12]	—
2	1.40[35,56]	1.14[28,96]	—	—	0.78[19,81]



**SERIES CA-N
OUTLINE**

ELECTRICAL PERFORMANCE

Model No.	Frequency Range GHz	Coupling (Note 1) dB	Frequency Flatness (Note 1) dB	Minimum Directivity dB	Maximum Input/Output VSWR	Maximum Ins. Loss Above Coupling Loss dB	Maximum Peak Power kW	Maximum Avg. Power Watts	Outline
CA-521-N	.5-2.0	10 ±1.0	±0.6	18	1.25	0.2	10	50	1
CA-522-N	.5-2.0	20 ±1.2	±0.7	18	1.25	0.2	10	50	1
CA-523-N	.5-2.0	30 ±1.25	±0.7	18	1.25	0.2	10	50	1
CA-631-N	1.5-3.0	10 ±1.0	±0.6	18	1.25	0.2	7	50	2
CA-632-N	1.5-3.0	20 ±1.2	±0.7	18	1.25	0.2	7	50	2
CA-633-N	1.5-3.0	30 ±1.25	±0.7	18	1.25	0.2	7	50	2

Notes:

1. Coupling includes Frequency Flatness. Coupling measurement is referenced to Input Port.

KEY: Inches[Millimeters] .XX ±.03 .XXX ±.010 [.X ±0.8 .XX ±0.25]



KDI INTEGRATED PRODUCTS

60 South Jefferson Road, Whippany, NJ 07981
Tel: 973-887-8100 • Fax: 973-884-0445
email: sales@mckdi-integrated.com
See us on the web @ www.mckdi-integrated.com

