

Coaxial

Power Splitter/Combiner

ZFSC-4375

4 Way-0° 75Ω

50 to 90 MHz



CASE STYLE: G15

Maximum Ratings

Operating Temperature	-55°C to 100°C
Storage Temperature	-55°C to 100°C
Power Input (as a splitter)	1W max.
Internal Dissipation	0.250W max.

Coaxial Connections

SUM PORT	S
PORT 1	1
PORT 2	2
PORT 3	3
PORT 4	4

Features

- high isolation, 34 dB typ.
- low insertion loss, 0.3 dB typ.
- rugged, shielded case
- excellent VSWR, 1.05:1 typ.

Applications

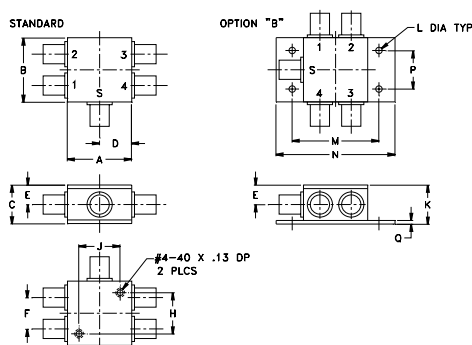
- VHF
- radio communication

Splitter Electrical Specifications

FREQ. RANGE (MHz)	ISOLATION (dB)	INSERTION LOSS (dB) ABOVE 6 dB	PHASE UNBALANCE (Degrees)	AMPLITUDE UNBALANCE (dB)
f_L - f_U	Typ. Min.	Typ. Max.	Max.	Max.
50-90	34 30	0.3 0.8	4	0.15

Connectors	Model	Price	Qty.
BNC	ZFSC-4375	\$89.95	(1-9)
BRACKET (OPTION "B")		\$2.50	(1+)

Outline Drawing

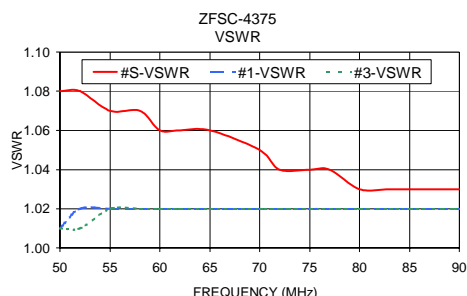
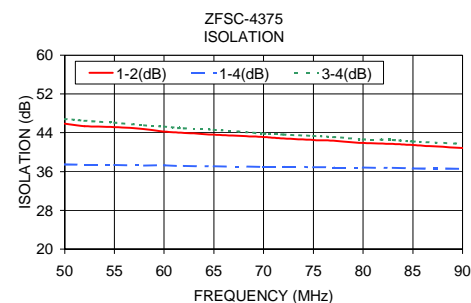
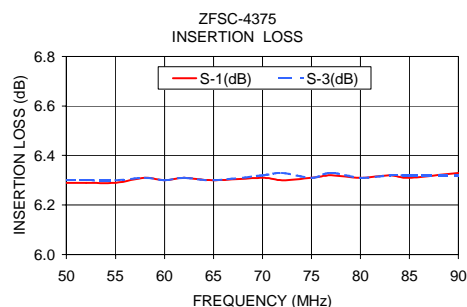


Outline Dimensions (inch/mm)

A	B	C	D	E	F	G	H
1.25	1.25	.75	.63	.38	.61	--	.80
7.11	31.75	19.05	16.00	9.65	15.49	--	20.32
J	K	L	M	N	P	Q	wt
.80	.76	.125	1.688	2.18	.75	.07	grams
20.32	19.30	3.18	42.88	55.37	19.05	1.78	85.0

Typical Performance Data

Freq. (MHz)	Insertion Loss (dB)				Amp. Unbal. (dB)	Isolation (dB)			Phase Unbal. (deg.)	VSWR S	VSWR 1	VSWR 2	VSWR 3	VSWR 4
	S-1	S-2	S-3	S-4		1-2	1-4	3-4						
50.00	6.29	6.29	6.30	6.29	0.01	45.87	37.46	46.83	0.25	1.08	1.01	1.01	1.01	1.01
52.00	6.29	6.29	6.30	6.30	0.01	45.35	37.43	46.49	0.22	1.08	1.02	1.01	1.01	1.01
55.00	6.29	6.29	6.30	6.29	0.01	45.15	37.39	46.06	0.28	1.07	1.02	1.01	1.02	1.02
58.00	6.31	6.30	6.31	6.31	0.01	44.78	37.24	45.54	0.28	1.07	1.02	1.02	1.02	1.02
60.00	6.30	6.30	6.30	6.30	0.01	44.24	37.29	45.24	0.40	1.06	1.02	1.02	1.02	1.02
62.00	6.31	6.31	6.31	6.31	0.01	43.95	37.16	44.90	0.28	1.06	1.02	1.02	1.02	1.02
65.00	6.30	6.31	6.30	6.31	0.01	43.62	37.08	44.62	0.37	1.06	1.02	1.02	1.02	1.02
70.00	6.31	6.32	6.32	6.32	0.01	43.13	36.98	43.83	0.33	1.05	1.02	1.02	1.02	1.02
72.00	6.30	6.31	6.33	6.32	0.02	42.80	36.99	43.62	0.37	1.04	1.02	1.02	1.02	1.02
75.00	6.31	6.31	6.31	6.31	0.01	42.50	36.91	43.36	0.39	1.04	1.02	1.02	1.02	1.02
77.00	6.32	6.32	6.33	6.32	0.01	42.38	36.84	43.13	0.41	1.04	1.02	1.02	1.02	1.02
80.00	6.31	6.32	6.31	6.31	0.01	41.89	36.81	42.65	0.36	1.03	1.02	1.02	1.02	1.02
83.00	6.32	6.32	6.32	6.33	0.02	41.68	36.76	42.52	0.38	1.03	1.02	1.02	1.02	1.02
85.00	6.31	6.32	6.32	6.32	0.01	41.46	36.66	42.21	0.38	1.03	1.02	1.02	1.02	1.02
90.00	6.33	6.32	6.32	6.32	0.01	40.89	36.58	41.70	0.54	1.03	1.02	1.02	1.02	1.02



electrical schematic

